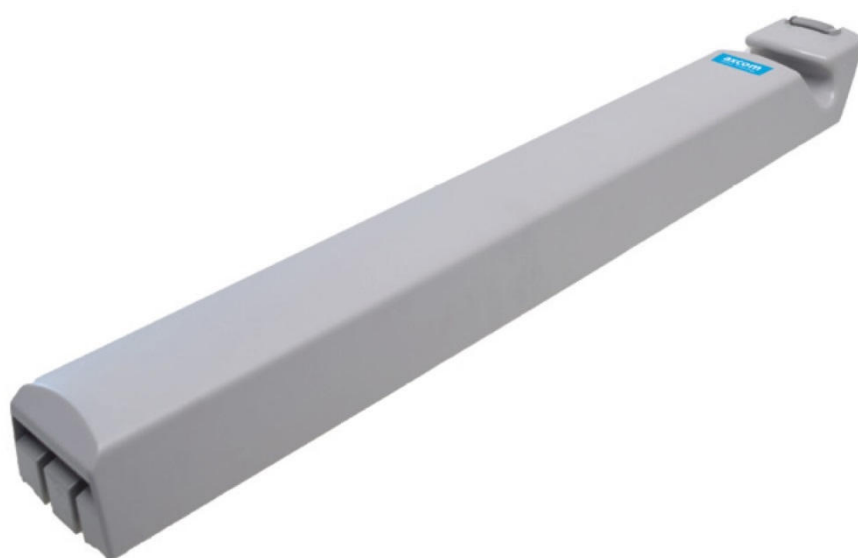


## Product-Specification

<b>Articel No.</b>	MB0101
Compatibility for	Arjo Patient Lifters
Manufacturer	axcom
OEM No.	KPA0100/110325
Technology	Lead
Voltage	24V
Capacity	6Ah
Dimensions (l* w* h*)	728*101*70
Weight (kg)	4,5



### More charge and discharge cycles

We individually measure battery cells to ensure their performance and service life.

### Lower overall costs

The higher capacity guarantees higher cost effectiveness over their total running life.

### Maximum security

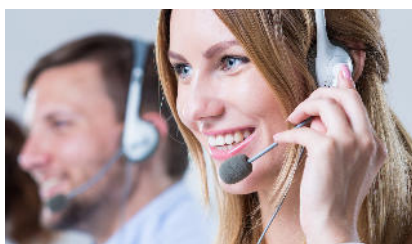
The flex-board technology reliably protects the battery against overcharging.

### High-carat connections

Gold-plated contacts prevent corrosion and ensure a loss-free current output.

### All-round premium

For the housing: no recycled plastic, but rather high-quality ABS/PC.



### Service Hotline

You would like to place an order or you have any questions? Our qualified sales team will find the best solution for your request.

**Phone: +49 (0) 2154-4838-0** (Monday-Thursday, 08:00 - 13:00, german time)

**Telefax: +49 (0) 2154-4838-444**

E-Mail: [info@axcom.de](mailto:info@axcom.de)

Axcom GmbH  
Carl-Friedrich-Benz-Straße 15  
47877 Willich  
E-Mail: [info@axcom.de](mailto:info@axcom.de)  
[www.axcom.de/en](http://www.axcom.de/en)